

GENERAL INFORMATIONS



Move Forward to the Future with us.



GENERAL INFORMATIONS



43 years experience

- Integrated plant
- R&D and Co-Designer services
- Tooling
- Testing & Validating
- Raw Material > Semi Product > Product > Component
- Assembling

370 staff

- 302 blue collars
- 68 white collars
- 42 engineers

18.000 m² area

- 7.500 m² covered area
- 11.500 m² open area

HISTORY

1980

- Nesan has been founded in Izmir by Nedim Sandalci
- Nesan has started his production life. In the same year cooperation has been made with BMC for the production of ignition switches for Leyland tractors.

1985

- Ignition switch production of the UZEL tractor, which is produced under the Massey Ferguson license, an international OEM company, started.

1991

- Our first export has been realized to England with 30.000 ignition switches.

1997

- Our plant has been moved to the Menderes location.

2000

- TS 9001 quality system inspections have been successfully completed and certificate has been obtained.

2001

- Our CNC machining line has been established.

HISTORY

2002

- Our Plastic Injection production line has been established.

2004

- Our Single Switch System production started.

2008

- FORD Otosan inspections have been successfully completed and Q1 Quality Certificate has been obtained.

2010

- Our electronic R&D department has been established.

2012

- Urea Level Sensor production started

2014

- Production of the Remote Control and Immobilizer locking system started.

HISTORY

2015

- İTÜ GVO İzmir Nesan Campus was put into service in 2015 as the newest link of Kindergarten, Primary School, Secondary School and High School, İTÜ Development Foundation Schools (GVO).

2017

- Our established has been registered by the Ministry of Industry as the 27th Design Centre in general of Turkey.

2018

- ISO 16949 inspection amended as IATF 16949 has been successfully completed.

2019

- NESAN Teknoloji A.Ş. has been working on Automotive Electronics, Internet of Things (IoT) since 2019 and was established to design and manufacture products using advanced technologies.

2020

- Nesan Otomotiv laid the foundations of its new factory with an area of approximately 14.000 square meters in ITOB OSB.

HISTORY

2021

- Push Buttons production started.

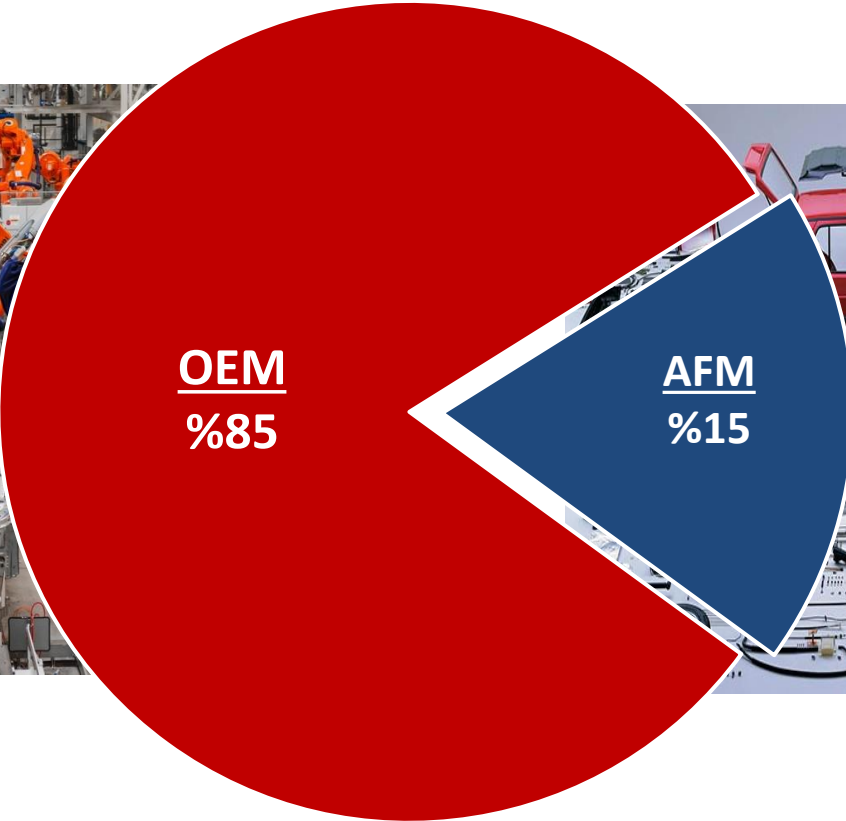
2022

- Tire Pressure Control System production started.

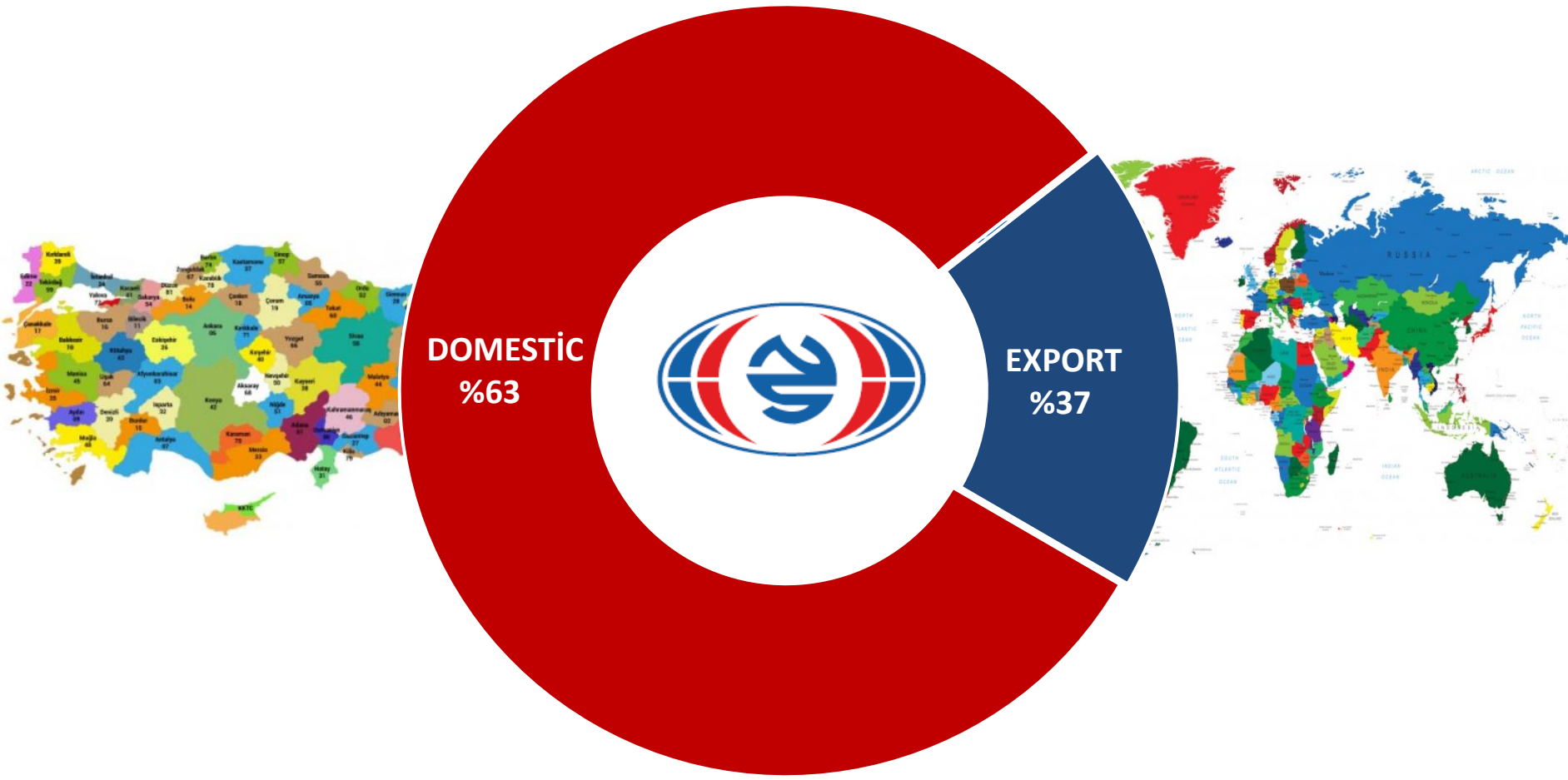
2022

- Electronic Pedal Sensors production started.

CUSTOMER PROFILE



CUSTOMER PROFILE



TRUCK & BUS OEM CUSTOMERS



DAIMLER

EvoBus



Otokar



TRACTOR OEM CUSTOMERS



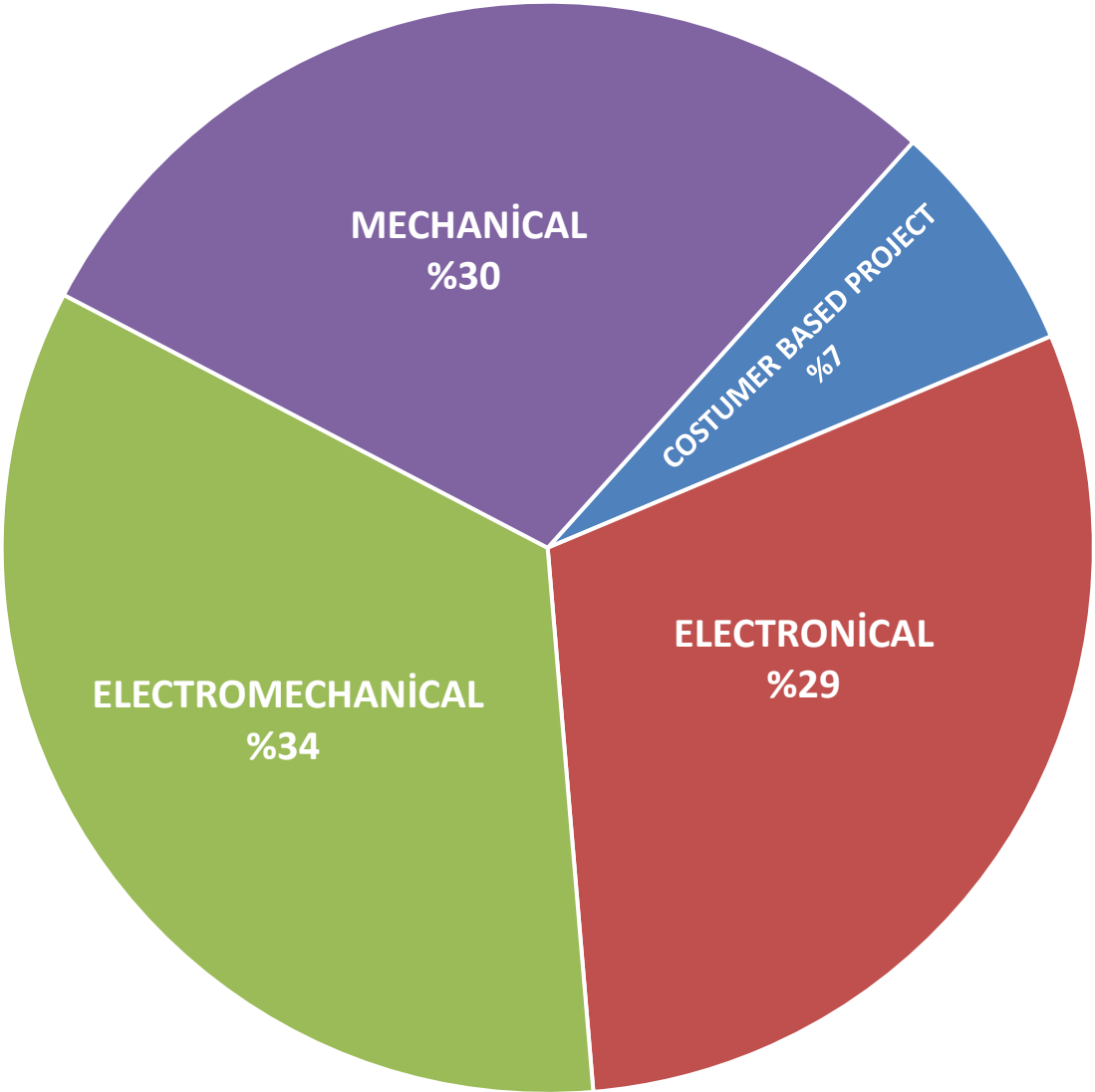
HEAVY MACHINE OEM CUSTOMERS



GLOBAL SUB-INDUSTRY COSTUMERS



PRODUCTS PROFILE



Fuel Level Sensors

- NESAN provides its customers project and production services with its experience based on long years in development of fuel components in accordance with regulations and special requests.

Fuel Level Sensors



FUEL SYSTEMS

Fuel Tank Cap

- Fuel systems are the most important elements of the vehicle safety. Every component in this system has to be considered according to the engineering calculations, customer-specific process settings and regulations.

Fuel Tank Cap



FUEL SYSTEMS

Other Fuel Tank Components

- Valves
- Filter
- Necks

Other Fuel Tank Components



UREA SYSTEMS

Urea Level and Quality Sensors

- All utilization conditions of the urea in the vehicles are defined in the ISO 22241 standards, and defines the design criteria here as dimensional, cleaning levels, positioning approach, measuring details and quality. All NESAN Urea Solutions are designed and produced in compliance with these standards.

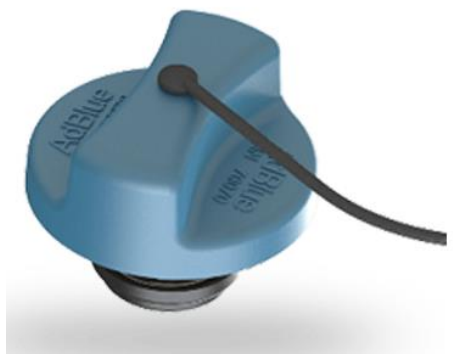
Urea Level and Quality Sensors



Urea Tank Cap

- A special non-toxic synthetic urea solution used in order to reduce chemically the NOx emissions of diesel fuel (DEF) light commercial and heavy service vehicles. The DEF consumption quantities of every vehicle are different. Selective catalytic reduction (SCR) converters using the urea solution as reduction agent are accepted as a switch technology in order to reduce the NOx emissions. In order to ensure the safe and constant operation of SCR Converting systems the quality of the urea solution used for this technology needs to be defined.

Urea Tank Cap



FUEL SYSTEMS

Urea Magnets, Filters and Sieves

- NESAN OTOMOTIV is a company providing total solutions for systems special to OE Customers from the design to the production. A broad range and product designs are providable in accordance with the material type and space rates particularly for the filling features, pump flow values and requested filtration

Urea Magnets, Filters and Sieves



Door Handles

- NESAN supports its customer with single switch control for all lockable components needed on vehicles from design to the final product and part provisions.
- After bringing the products to an innovative status with traditional mechanical solutions by means of digital/electronic touches i.e. remote control modules it is ensured that the products take their place in the commercial vehicle market.

Door Handles



Hood – Trunk Locks

- In the design of all lockable parts are materials and design criteria applied, which are minimum affectable from climate conditions for long years.
- Further, in order to ensure that all lockable products have a design identity compatible with your vehicle and is includable to the Single Switch System, they are turned into product kits by means of designs special to the customer.

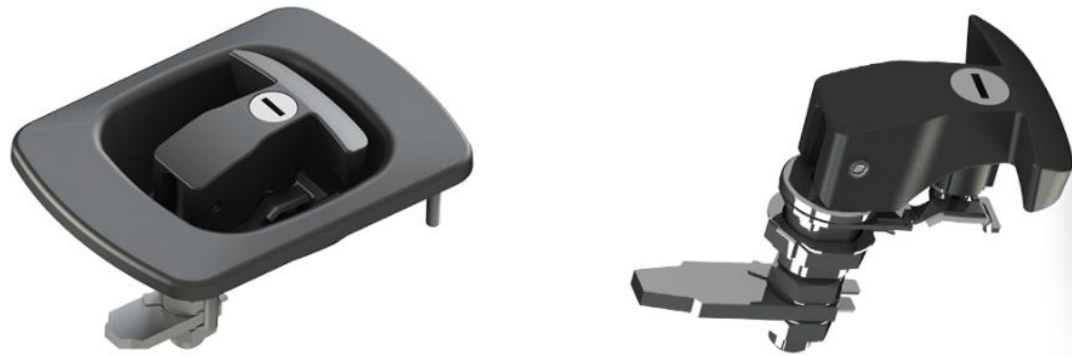
Hood – Trunk Locks



Tool Box Locks

- NESAN provides flexible designs, which are compatible with your vehicle owing to the lock systems of broad variations.
- These studies are confirmed by our engineers after being operated digitally on the relevant area of your vehicle and thereafter by means of on-site applications realized on the field together with your staffs.

Tool Box Locks



Angular / Tur
Type Sensors

- Besides accustomed mechanical and analogue systems; enhance your comfort on the vehicle and the utilization life by means of NESAN's touchless magnetic sensors of advanced technology.

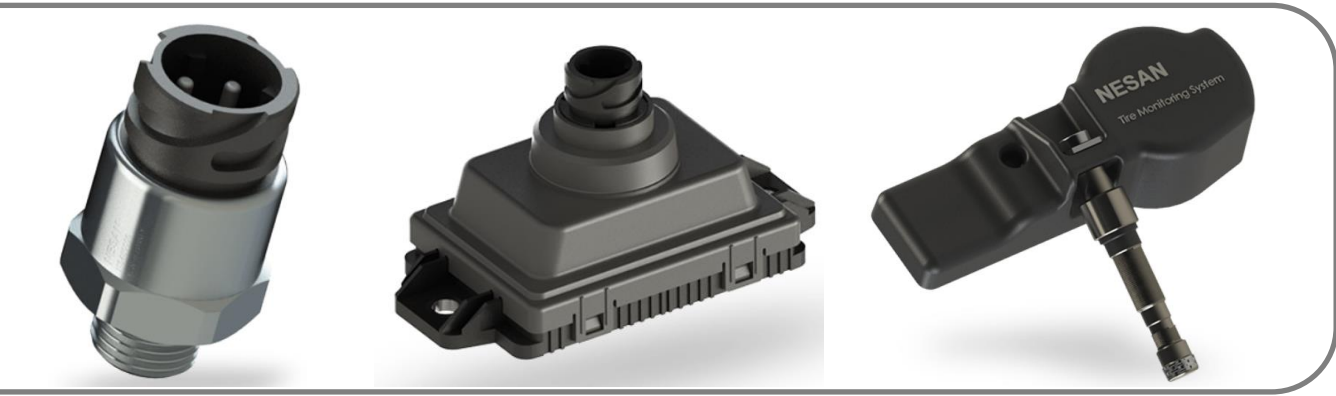
Angular / Tur
Type Sensors



Pressure Sensors

- Sensor technologies play an important role in ensuring the digital communication and control on the vehicles.
- At the present time sensors have a broad role in the development of autonomous vehicles and the algorithms thereof, and will continue to be so.

Pressure Sensors



Oil & Cooling
Water Level &
Heat Sensors

- Our sensors, capable to perform analogous and digital measurements, ensure warning before your relevant fluid system reaches the critical level, and **Gives Confidence...**

Oil & Cooling
Water Level &
Heat Sensors



**Remote &
Immo Systems**

- Remote Keyless Entry
- Immobilizer
- Transmitters

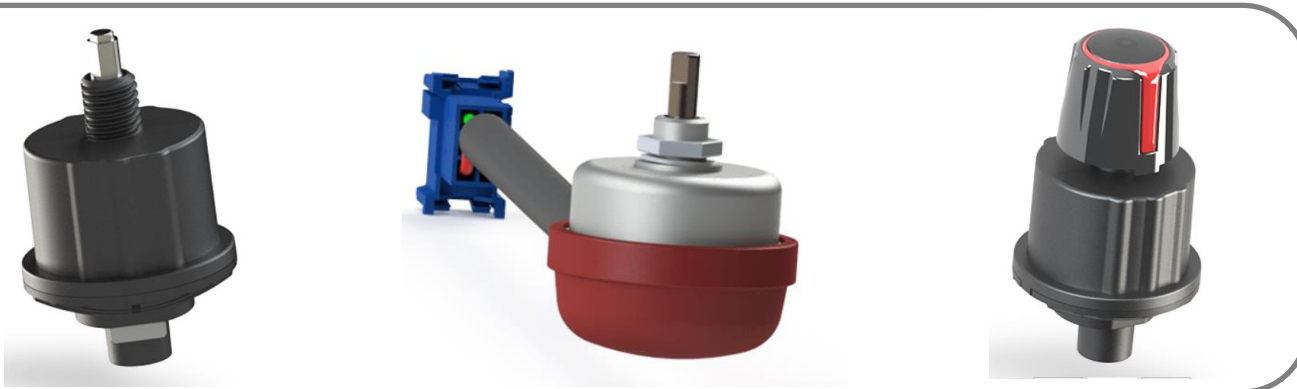
**Remote &
Immo Systems**



Function and Actuating Switches

- Our products, where all encountered problems are solved with an experience of over 40 years and which involve an innovative approach, are presented to the regard of our valuable customers.
- The in-vehicle controls are ensured analogous and/or digitally by means of our new generation angular position sensors. Thanks to the replaceable button and knob structure it is possible to make the vehicle compatible with your design in visual and functional respect.

Function and Actuating Switches



Ignition Switches

- Nesan actuating switches; send the required electrical sparkle and/or electronic signal to your vehicle and ensure the control and actuation of the system motion.
- Our new generation models are addable and carry the safety of your vehicle to a higher level with the antenna and immobilizer feature...

Ignition Switches



Pressure Switches

- Switches are a triggering manner, which shutting the electrical contact down when a certain set fluid pressure / mechanical force or temperature increase data is reached. The switch is designable to come in contact with relevant effects and atmospheres i.e. increasing or reducing for pressure / mechanical motion or temperature.
- Depending on your various utilization conditions the material details, connection sprocket structures, shaft dimensions and connectors may be amended in accordance with your request.

Pressure Switches



Magnetic Triggering Buttons

- Switches are prevalently used in the industry in order to automatically inspect and control the systems. Magnetic triggering buttons, which can be used in isolated and long life conversions, where arcing is independent from the friction and pressure force, provide a broad utilization are with the modifiable button colours and visuals.

Magnetic Triggering Buttons



Temperature Sensors

- Switches are prevalently used in the industry in order to automatically inspect and control the systems. Magnetic triggering buttons, which can be used in isolated and long life conversions, where arcing is independent from the friction and pressure force, provide a broad utilization are with the modifiable button colours and visuals.

Temperature Sensors



*Mechanical
Switches*

- Switches are prevalently used in the industry in order to automatically inspect and control the systems. Magnetic triggering buttons, which can be used in isolated and long life conversions, where arcing is independent from the friction and pressure force, provide a broad utilization are with the modifiable button colours and visuals.

*Mechanical
Switches*



Customer Based

- Wabco Safety Valve
- Wabco IMA Screw

Customer Based



Our Other Products

- Headlight Switches
- Four-Way Flashers
- Master Battery Switches
- Starter Relays
- Oil Pressure Switches

Our Other Products



PRODUCTION FACILITIES

R&D

- The R&D Centre included in its structure and the R&D company NESAN Teknoloji A.S inside the group of companies works particularly on the domestic designs for vehicle entrance systems with keyless / technological communication capability and sensor technologies of a broad variant (pressure, motion, light, fluid quality, heat, position, angle and magnetics... etc.). Provides for world giant OE customers as Co-Design joint or turn-key R&D/Production Start-Up System Design Project services with high performance sustainable products at high life and field resistances for fuel systems, lockable on-vehicle components and in-vehicle electro mechanics.

R&D



PRODUCTION FACILITIES

MOULD PRODUCTION

- High Speed Mould Processing CNC Splines
- Precision Wire Erosion CNC's
- Precision Submarining Erosion CNC's
- Traverse Drills
- Conventional Splines
- Conventional Lathes
- Conventional Traverse Drills
- CNC Grinding Machines



SEMI-KNOCKED DOWN PRODUCTION

- Plastic Injection
- Metal Forming
- Zamak and Aluminium Casting
- CNC Machining
- Electronic Card Production

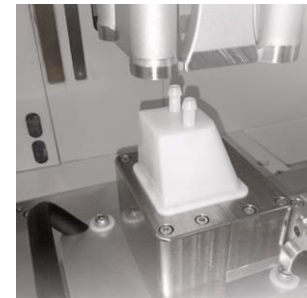


PRODUCTION FACILITIES

MOUNTING

- NESAN's Mounting Engineers are considering during the design stage all details received from the Design Fault Mode Analysis (DFMEA) and specific requests of the customers on the mounting lines, and executing with this perspective joint-works with the Engineering Application Department existing in the structure, and are commissioning the Cell Type Mounting Lines on every station on basis of Quality, Occupational Safety, Accuracy, Debugging, Yield and Sustainability.

MOUNTING

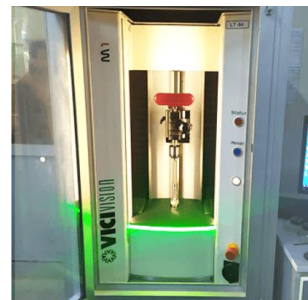
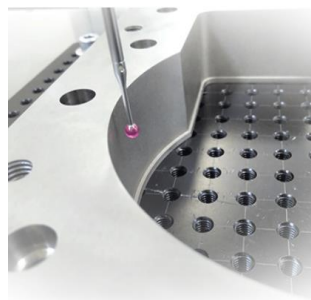


PRODUCTION FACILITIES

**QUALITY
CONTROL**

- Digital CNC CMM 3D Prob Measure
- Digital Manual CMM 3D Prob Measure
- Optical 3D Profile Measure
- Optical Rotary Measure
- Hardness Measurements
- Surface Porosity Measurements
- 2D Profile Projection
- Spring Tension Measurements
- Thermal Cameras
- Electromechanical and Electronic Control Devices
- Test Mechanisms prepared according to customer requests

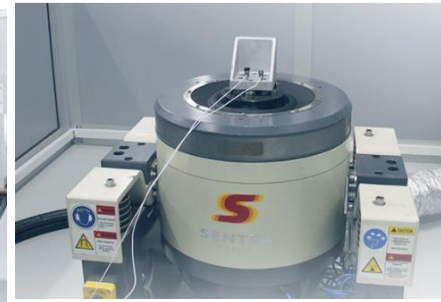
**QUALITY
CONTROL**



PRODUCTION FACILITIES

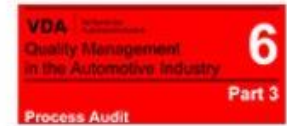


- Thermal Acclimatization Cabins (ISO 16750 -4/-60°C to +150°C)
- Thermal Shock Test Cabins (ISO 16750 -4/-60°C to +150°C)
- Moisture containable Thermal Conversion Tests
- Random vibration (ISO 16750 -3/10 to 2000 Hz)
- Natural Frequency and Sinus Vibrations Tests (ISO 16750 -3/10 TO 2000 HZ)
- Mechanical Shock Tests (ISO 16750 -3/MIL STD)
- Salt Test (NSS ISO 9227)
- IP Tests (Water/Dust IP66 –IP67 – IP68 – IP69K)
- Customer-specific Test Mechanisms
- Tension/Compression Test Device
- 3 Dimensional Measurement
- Profile projection
- Surface hardness and porosity
- High Voltage resistance test
- Voltage Drop Test Device
- Leakage Test Devices
- Flow Tests
- Tank Filling Tests





- **ISO 9001:2018**
- **IATF 16949:2018**
- **ISO 14001:2018**
- **Ford Q1**
- **OHSAS 18001:2018**
- **VDA 6.3**
 - DAIMLER
 - WABCO
 - CONTINENTAL
 - JCB
 - DAF





THANK YOU

FOR FURTHER INQUIRIES, PLEASE APPLY TO:

- Web Site : www.nesan.com.tr
- E-Mail : info@nesan.com.tr
- Phone : +90 232 782 56 00